



**IMPORTANT! Read Me First!**

# Quick Setup Guide

*Congratulations!* With your purchase of the POPnetserver 2000, you now have the means to quickly and easily increase your network storage. For most users, this *Quick Setup* provides all the information you'll need.

## Minimum System Requirements

### System

At least one workstation with a functioning CD-ROM drive.

### Software

Workstation running Microsoft Windows 95, 98, NT 4.0, Me or 2000 and/or a Microsoft Internet Explorer-compatible browser.

## Contents



**POPnetserver 2000**



**CD-ROM**  
-User Guide  
-POPassist Utility



**Power Cable**



**LAN Cat. 5 Ethernet Cable (gray)**



**Peer to Peer Ethernet Crossover Cable (red)**

### Quick Setup Guide



**Warranty Card**

## 1 Placement

Place the POPnetserver 2000 on a hard, sturdy surface with sufficient airflow both in front of and behind the unit.



Your POPnetserver 2000 can also be stacked, mounted vertically, on a wall or in a rack. Refer to Chapter 2 of the *POPnetserver 2000 User's Guide* for specific instructions.

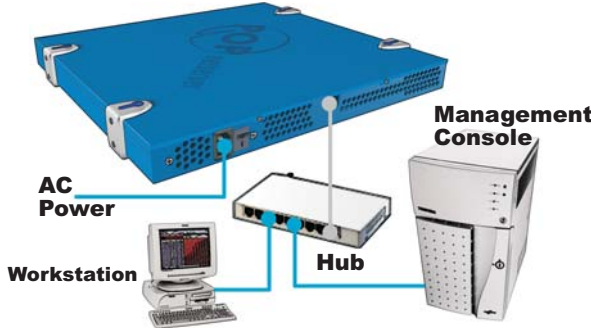


## 2 Cabling

### LAN Configuration

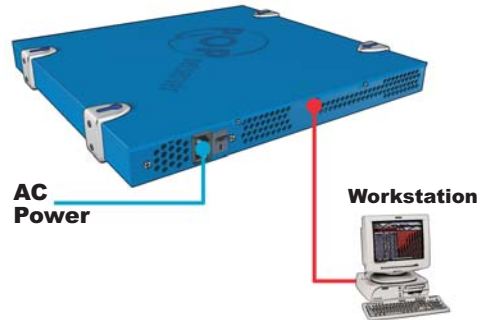
A functioning Ethernet network with one spare port on your hub, switch or workstation.

*For networks without a hub, you must use the red Ethernet crossover cable to connect the POPnetserver directly to a workstation.*



### Peer to Peer Configuration

When using the POPnetserver in a Peer to Peer setting, you must have a functioning Ethernet connection on your workstation.



## 3 Powering Up

*Make sure the power supply switch (on the rear panel of the POPnetserver 2000) is in the "On" position. During normal operation, this switch should remain in "On."*



Power up the POPnetserver 2000 by momentarily pressing the diamond-shaped switch on the front panel.



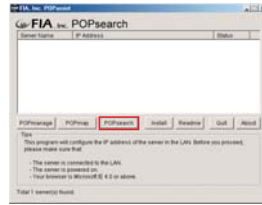
- Wait while Booting (flashing)
- Ready for next step

Make sure the flashing, blue LED is on solid before inserting the POPassist and User's Guide CD.

# 4 Device Installation

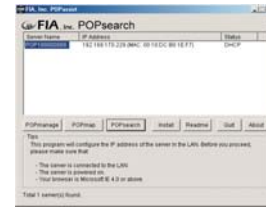


A. Insert the POPassist and User's Guide CD to automatically launch the POPsearch utility.

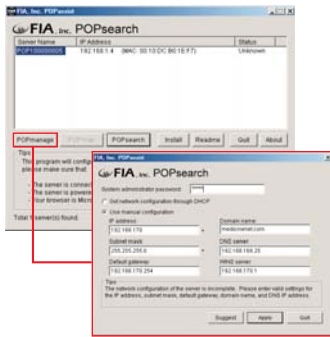


B. If the POPsearch window doesn't list your POPnetserver, manually click the 'POPsearch' button.

C. If Status indicates 'DHCP,' proceed to Step 5, *Map a Drive*. Otherwise, follow the procedure below.



*'DHCP' means there's a DHCP server on the network to automatically assign an IP address.*



D. If Status is 'Unknown' or 'Bad,' your network doesn't have a DHCP server. The IP address must be manually assigned, as described in the following steps.

E. Click the 'POPmanage' button.

F. Enter a valid IP address and sub-net mask, or click on the 'Suggest' button and the system will determine them for you.

G. Enter the Default Gateway, Domain Name, DNS Server and WINS Server (if known) or leave them blank and ignore the warning messages.

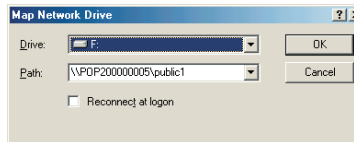
H. Enter the POPnetserver password (default is "ADMIN") in the Password box.

I. Click the 'Apply' button. Wait while POPsearch once again looks for the server.

J. Proceed to *Step 5, Map a Drive*.

# 5 Map a Drive

Once a valid IP address has been assigned, click the 'POPmap' button.



Select a network drive letter for your new POPnetserver and you're up and running with just two mouse clicks!

*If the system asks for a user name before mapping the drive, enter "guest" for the user name and leave password blank.*

# Advanced - Configuration

Although the default configuration of the POPnetserver 2000 works well for most networks, the POPmanage utility allows you to modify the settings of the POPnetserver 2000 to suit your particular needs.

Launch the POPassist utility and then click on the POPmanage button.



Enter the password (default is ADMIN).

*In the event you change the password, make sure not to lose it. For security reasons, it's not possible to access the POPmanage utility without a valid password.*



As you modify the settings on the POPmanage screen, helpful tips appear on the right side of the screen to assist you.

A more detailed description of the POPmanage utility can be found in Chapter 4 of the *POPnetserver 2000 User's Guide*.

# Troubleshooting - Common Problems and Solutions

## POPnetserver 2000 system does not power up.

- Check to see if the Power LED is on.
- Verify the power supply switch in the back of the POPnetserver is in the 'On' position.
- Make sure power cord is connected between the POPnetserver and a power outlet. Make sure the power outlet is functioning correctly. If you plugged the POPnetserver into a power strip, make sure it's on and the circuit breaker hasn't tripped.

## POPsearch Utility does not see the POPnetserver 2000

- Power down the system and then power back up. Make sure the blue LED stops flashing before proceeding. A flashing power LED indicates that the system is not ready.
- Click on the POPsearch button.
- Verify all cables are connected and the unit is on.

## No Network Connection

- Verify the network is functioning properly.
- Check to see if the Network LED is on.
- Make sure the Category 5 Ethernet cable is installed between the POPnetserver and a valid network hub.
- If using a network without a hub, make sure you have acquired a functional Ethernet crossover cable and connected it between the POPnetserver and a functioning workstation.

More comprehensive troubleshooting can be found in the *POPnetserver 2000 User's Guide*.

## Assistance Resources

If all else fails, the following assistance resources are available:

**Website**  
www.popnetserver.com

**Email**  
support@popnetserver.com

**Phone**  
(408) 232-0698