

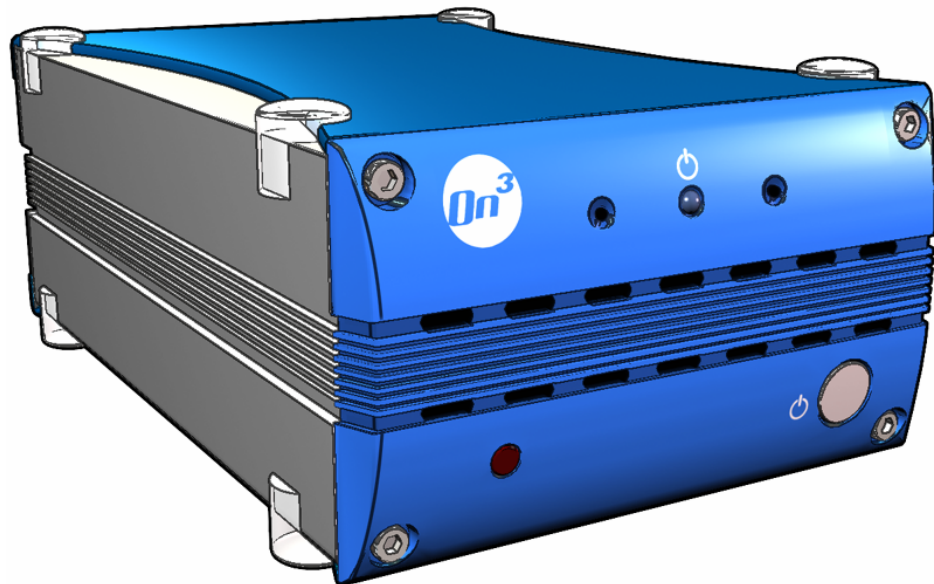
Chapter 1: Introducing On3

Congratulations! You're moments away from sharing and storing your library of digital media, including videos, music pictures using the FIA On3 Digital Media Player and Library.

Introduction

The On3 unit contains advanced video and audio processing technology as well as an internal 80- or 120-GB hard drive. The unit is simple to setup, and once your digital data has been installed, it can be easily viewed at any time since the unit is always on and ready.

No PC is required to view or listen to your entertainment media. With the FIA On3, the entire family can enjoy high-quality digital entertainment throughout the entire home.



On3 System Features

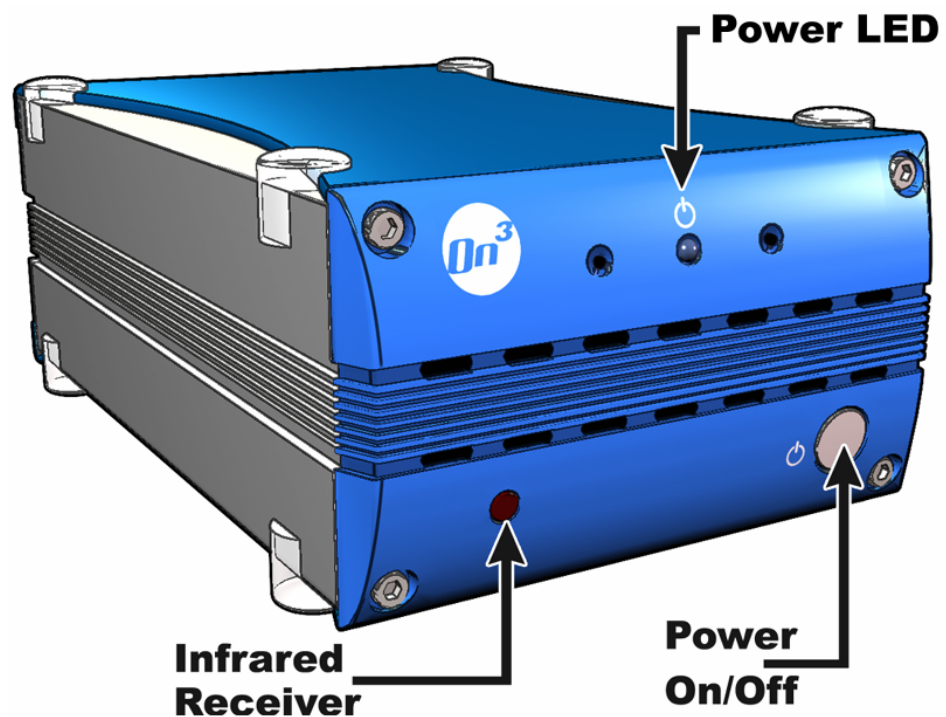
- View videos and photos on the TV with home theater, high quality viewing
- Listen to music on the stereo with crystal clear audio sound
- Portable compact design can be used alone or networked through wireless or Ethernet LAN
- Media is always available - the unit is always on, always ready
- A PC is not required to view and listen to your digital media
- Installs in less than 5 minutes and with only 2 mouse clicks
- Packs loads of digital medial content onto a standard 80 or 120-GB library
- Supports Microsoft and Apple operating systems
- Supports analog and digital 5:1 audio connections
- Enjoy your media in every room in the house (in up to 4 rooms with optional On3-xr units).

On3 System

The illustrations below show the basic components you should be familiar with. A description of these components follows:

Front Panel

On the front of the On3 Media Server are the following components:



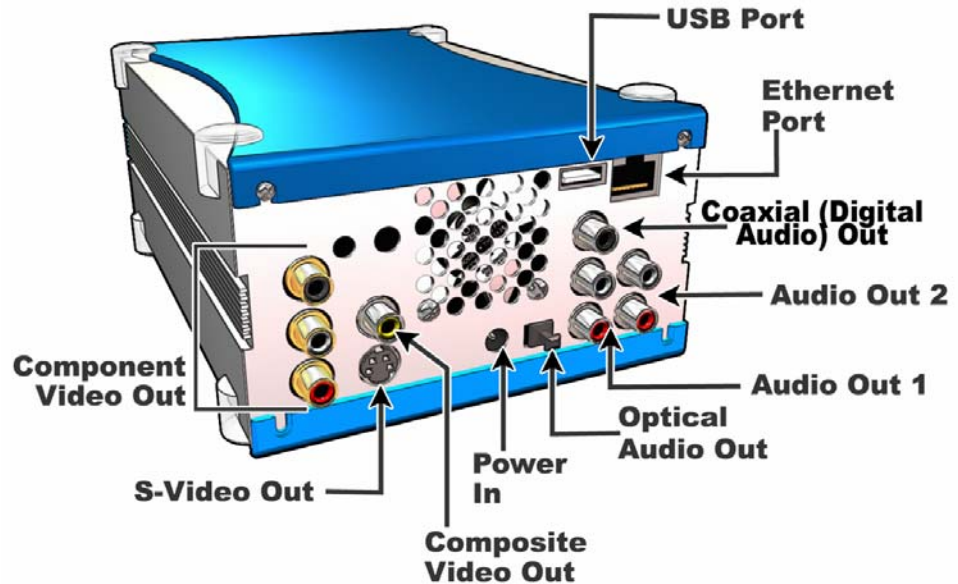
Power Button – Manually powers up the On3 unit or shuts it down.

Power Indicator – This light is illuminated whenever power is applied to the On3 unit. This LED flashes whenever the On3 is initially powered up. Once it's on steady, the On3 is ready to use.

IR Receiver – Receives signals from the On3 Remote Control. Make sure this opening is never obstructed or else the Remote Control may not function properly.

Rear Panel

On the rear of the On3 device are the following components:



Power Connector – Supplies power to the On3 unit.

Ethernet Port – Standard 10/100 Ethernet network port for connecting the On3 unit to a home network or directly to a PC. If a wireless connection is not available, this is how digital media is transferred onto the unit.

USB Port – Industry standard USB port that supports an external hard drive for additional storage. If attaching an external drive, be sure it has its own power supply.

Video Outputs

Video (Component) Out – For optimum video performance, use this video output if available.

S-video Out – This high-performance video output is superior to composite video, and should be used if available.

Video (Composite) Out – Oldest and most common video format. For display devices lacking either Component or S-video, this is the option to use.

Audio Outputs

Optical Digital Audio – Utilizes a fiber optic cable to reduce interference and signal degradation common when using traditional cables. This option provides the best audio quality.

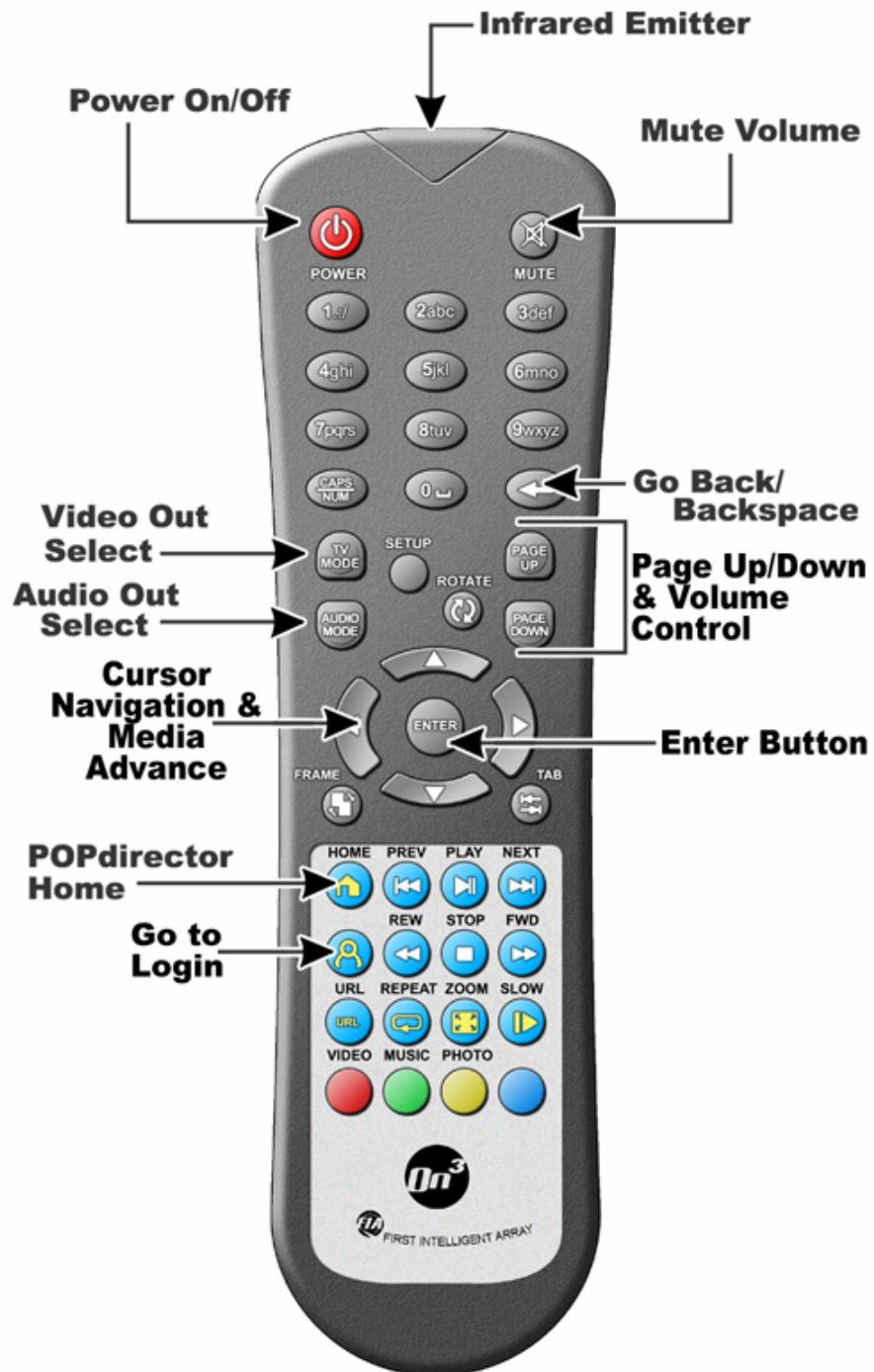
Coaxial (Digital Audio) Out – High-quality video output for digital audio devices. Use this option if Optical Digital is unavailable.

Audio (Analog) Out (Primary) – Stereo output for older audio devices incapable of utilizing either Optical Digital or Coaxial.










Audio (Analog) Out (Auxiliary) – Secondary set of stereo outputs for another audio device.

Remote Control

The On3's Remote Control should be intuitive and familiar to most people. Some of the Remote Control's buttons serve multiple functions (and others are disabled), depending what mode you're in.



On3 Control Buttons

	<i>Power</i>	Applies or removes power to the On3 video processor.
	<i>Mute</i>	Toggles the volume on or off.
	<i>Number/Text keypad</i>	Allows for menu selection and/or data entry. Any special characters not displayed on the remote can probably be found by repeatedly pressing the “1” key.
	<i>CAPS/NUM</i>	Toggles between all, numbers only, upper and lower case letters on the number/text keypad.
	<i>Go Back</i>	Return to Previous screen or delete entered data.
	<i>TV Mode</i>	Switches to alternate video output modes. Default setting is NTSC.
	<i>Audio Mode</i>	Scrolls through the audio output options: Mono Left, Mono Right and Stereo (default).
	<i>Page Up</i>	On multipage menu screens, moves to the previous page. When media is playing, increases volume.
	<i>Page Down</i>	On multipage menu screens, moves to the next page. When media is playing, decreases volume.



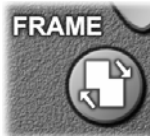
Setup

Reveals the setup/configuration tab for the On3 hardware setup.



Rotate

Rotates the picture 90 degrees each time this button is pressed.



Frame

For Internet browsing which has frame on the web page, THIS FEATURE IS NOT CURRENTLY SUPPORTED.



Tab

Scrolls the screen cursor through the selections on the page.



Navigation Arrows

Moves the cursor around the screen in the direction of the arrows. Pressing Enter chooses the highlighted selection.



Home

Immediately returns the user to the home page. When media is playing, you must first press the Stop button before this will function.

Media Control Buttons



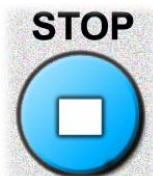
Navigation Arrows

When music or videos are playing, pressing the Left or Right arrows displays a percentage representing a location within the media file. Releasing the Arrow button takes the user directly to that point. Up and Down Arrows can be used to go forward or back during photo slideshows.



Play/Pause

Plays the currently-selected media file or returns video to normal speed. If media is already playing at normal speed, pressing this button will pause it. This button also pauses photo slideshows during play.



Stop

Stops the currently-playing media file or slideshow and displays the applicable menu screen.



Previous

When playing all (music and videos), skips to the previous media file.



Next

When playing all (music and video), skips ahead to the next media file.



Login

Return to Login screen. This button is disabled while media is playing.



Rewind

When a video is playing, this button will reverse the video. Pressing again will increase backward speed to 2x, 3x and 4x. To return video to normal play, press the Play button once.



Forward

When a video is playing, this button will accelerate the video speed. Pressing again will further increase the speed to 2x, 3x and 4x. To return video to normal play, press the Play button once.



URL

Allows the user to enter an Internet URL through the remote keypad. THIS FEATURE IS NOT CURRENTLY SUPPORTED.



Repeat

Once pressed, will automatically repeat the currently-playing video or music file.



Zoom Video

When a video is playing, toggles display between Actual Size, Full Screen and Fit to Screen (maintaining aspect ratio).



Slow

When a video is playing, pressing this button slows the playback to 2x, 4x, 8x, 16x or 32x. Pressing Play once again returns video to normal speed.

Media Shortcut Buttons



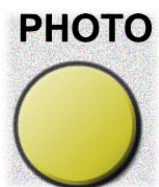
Video

Goes directly to the main Video screen. If media is currently playing, you must press Stop before this button will work.



Music

Goes directly to the main Music screen. If media is currently playing, you must press Stop before this button.



Photo

Goes directly to the main Photo screen. If media is currently playing, you must press Stop before this button.



Auxiliary

Currently not used.

Documentation and Software

Your On3 and On3-xr unit includes the following important documentation and software:

Quick Setup Guide

For most people, this sheet contains all the information necessary to setup, troubleshoot and use the On3 Digital Media Player and Library.

Setup CD

Contains software, utilities and an electronic version of the On3 User Guide.

User Guide

This electronic document contains complete and comprehensive information regarding all aspects of the On3 Digital Media Player and Library.

Chapter 2: On3 Setup

Setting up and configuring the On3 Media Server is no more difficult than adding a piece of equipment to your home entertainment center. Everything you need to know is included in this chapter. Advanced users may wish to refer to the On3 Quick Setup Guide for more concise instructions.

Before you Begin

Before you begin, make sure you have the following minimum requirements:

- Quality video and/or audio output device such as a television, monitor or home stereo system.
- PC system or home network with a functioning Ethernet port or a wireless network (if purchased wireless On3 option).
- Digital media in AVI, MPEG, MP3 and JPEG formats.

Hardware Setup

Follow the instructions below to set up the On3 hardware:

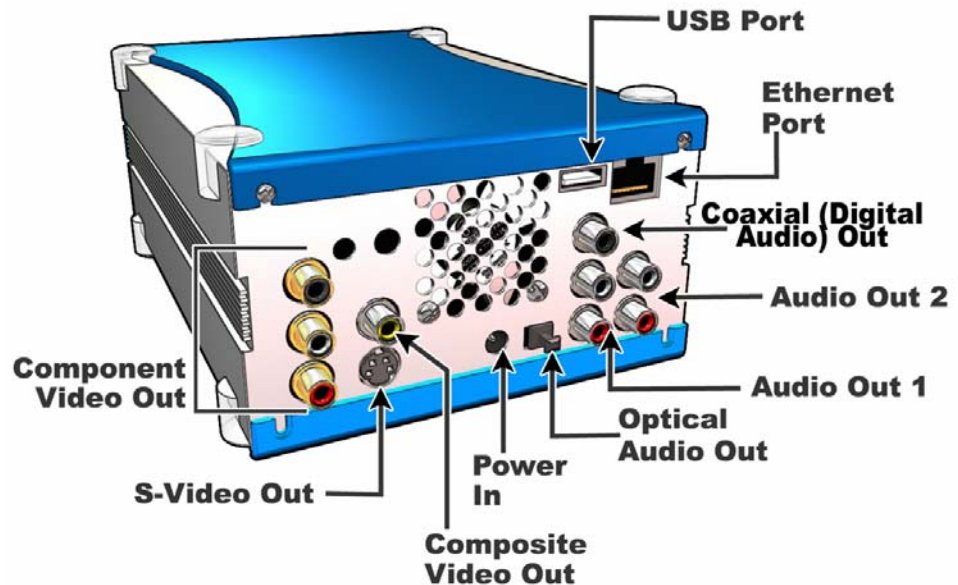
Placement

When deciding where to place your new On3 system, consider the following guidelines:

- The On3 unit should be placed on a flat, sturdy surface.
- Sufficient space should be provided behind the unit to accommodate cabling and cooling.
- The IR receiver on the front bezel should not be obstructed.

Cabling

The On3 was designed to seamlessly integrate with virtually any entertainment configuration. Refer to the illustration below while determining the cabling options that best suit your needs.



Video Connections

Component Video Out - This connection produces the highest-quality video display, and should normally be the first choice.

OR

S-Video - Produces good results. If Component video isn't available, this is a good second choice.

OR

Composite Video Out - Intended solely for older video devices that don't have S-Video or Component Video inputs. This option is also the most common and is compatible with virtually every video device.

Audio Connections

Optical Audio Out - Offers the highest-quality audio with none of the distortion or noise associated with traditional cables. Use this option when connecting the On3 to high-end audio equipment.

OR

Coaxial (Digital Audio) Out - High-quality digital audio with AC-3 support. If Optical Audio isn't available, this is the second choice.

OR

Stereo Audio Out - Redundant pairs of Stereo Audio Out suitable for most audio equipment. This is by far the most common audio configuration and should be used whenever Optical or Coaxial aren't available.

Network Connection

In order to configure, manage and transfer digital data to the On3, it must be connected to a network through a hub (with a gray network cable), directly to a PC (with a red crossover cable), or if equipped with the optional wireless feature, over a wireless network.



Standard network connection.



Peer-to-peer connection.

Depending on your particular network configuration, plug the appropriate cable into the Ethernet port on the back of the unit.

Connecting Power

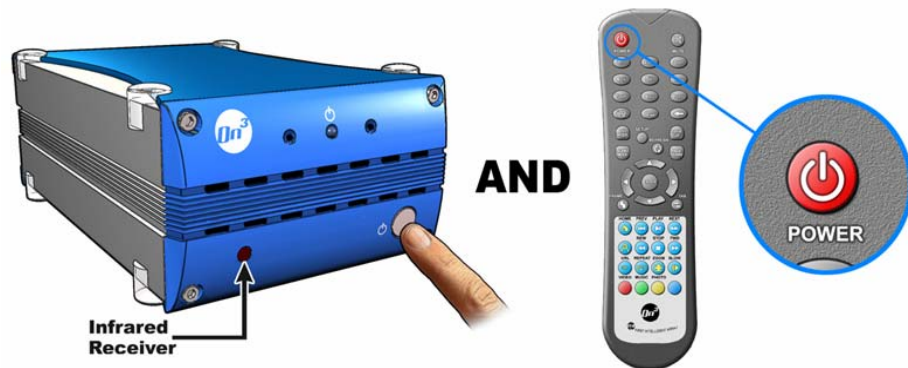
Last but not least, be sure to connect the included power cord and transformer between the On3 unit and a grounded, three-pronged outlet.

Powering the On3

To turn on the On3 Digital Media Player and Library, you must first press the large power button located on the front of the unit. This applies power to the internal hard drive initializes the data on the On3. This power button can remain on at all times.

Using the On3 Remote Control, press the red power button to activate the internal video processor.

While the On3 unit is powering up, the blue LED will flash. Once the LED is on steady, the unit is ready to use.



Depending on how you connected the On3 to your video display device, it may be necessary to switch the video input setting on your display. Usually, this is a button on either the television's remote control or front display labeled "video."

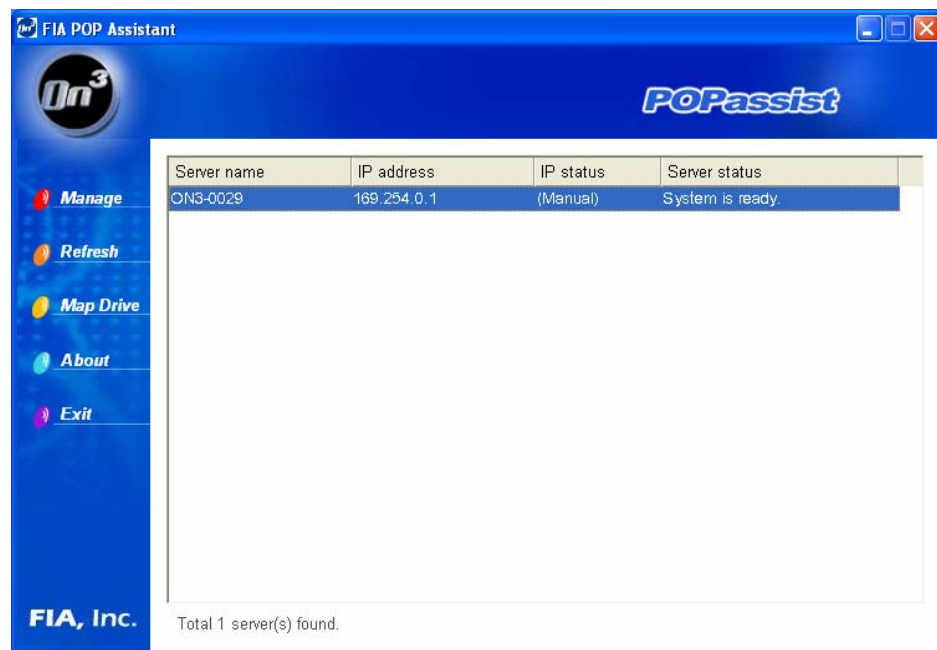
At this point, your television should display the following menu screen:



Configuration

Once the On3 Digital Media Player and Library has been placed, all the cables attached and powered up, it must be configured to allow digital media files to be transferred to it.

1. Insert the Setup CD into a PC that's connected directly to the On3 unit or through a home network.
2. The POPassist utility should automatically run and search for the device.



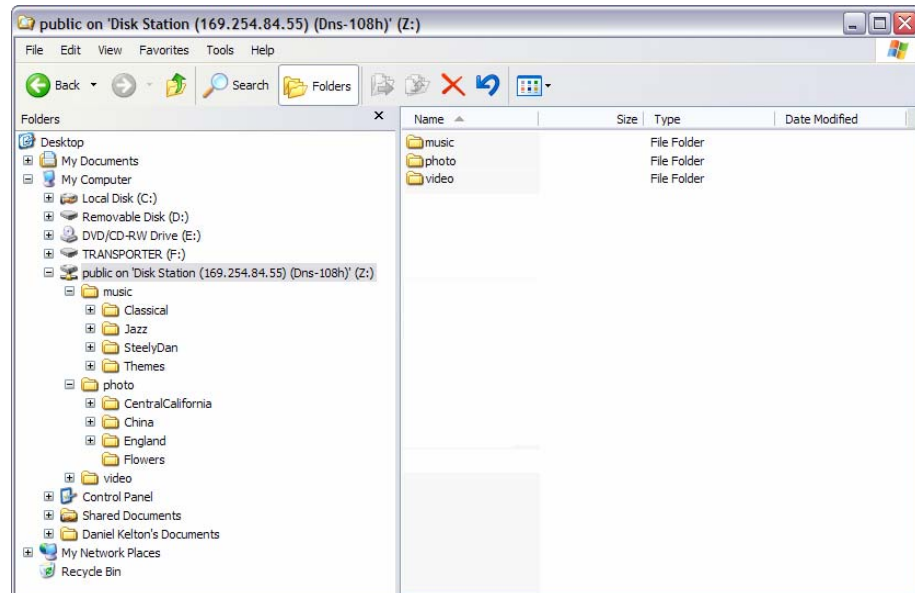
POPassist helps your home computer identify the On3 Digital Media Player and Library and automatically configures it for you.

3. Once the On3 unit has been found, click on the Map Drive button to assign it a network drive letter.

After the On3 Media Server has been assigned a drive letter, it can be accessed just like any other drive on a network. Digital media can be copied to it, renamed and arranged as needed.

Transferring Media to On3

Once the On3 Digital Media Player and Library has been configured and mapped, media files can be dragged and dropped onto it like any other device on the network.



Place video files (AVI, MPEG) into the Video folder, music files (MP3, WMA and WAV) into the Music folder and photos (JPEG, PNG, GIF) into the Photos folder.

Additional folders can be added under the default folders to further organize and categorize your media files.