



IMPORTANT!

Read Me First!

On3-xr Quick Setup Guide

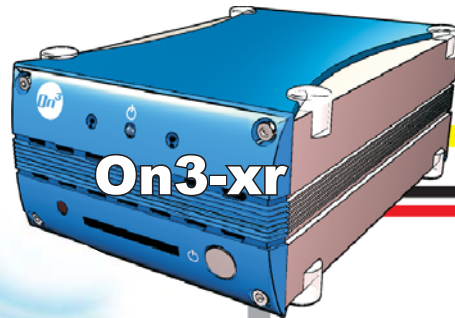


Congratulations! With your purchase of the On3-xr you can now increase the functionality of your On3 Media Player and Library and play your personal digital data in every room in your home.

1 Verify the existing On3 unit is on and attached to your home network



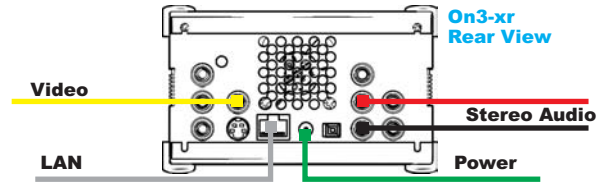
If using the wireless option, refer to the special instructions on the opposite side of this sheet.



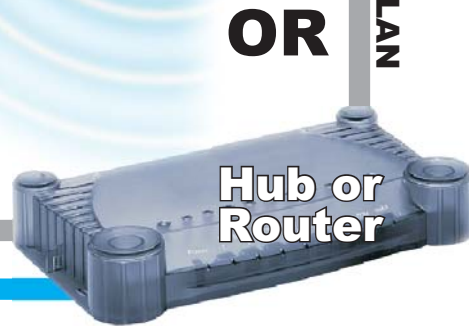
2

Attach On3-xr to the home network with a gray LAN cable. (or through the optional wireless card.) Supply power through the included power cord.

Activate the On3-xr by rapidly pressing the front power switch twice.



The On3-xr should also be connected to a TV and displaying the POPdirector Login screen.



OR
LAN
Hub or Router

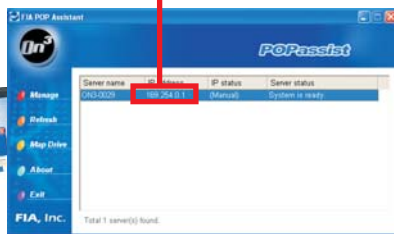
Audio
Video

4

Using the On3-xr remote, choose 'Edit' from the login screen.

With the remote's numeric keypad, replace the default IP address with the one from Step 3.

3 Insert the POPassist Setup CD into a PC attached to the network.



Use POPassist to search the network for the On3.

Once it's been found, write down the IP address.



In the event of a problem, refer to the Troubleshooting section on the back of this Quick Setup Guide.

TIP: Use the Back key to erase each digit. For a period (".") press the "1" key twice.



After entering a digit, the cursor will automatically advance to the next position if you wait a few seconds.

Once the proper IP address has been entered, select 'Save' and press 'Enter.'

After being properly configured, the On3-xr should function exactly like the original On3 Media Player and Library.



Important Wireless Instructions

If your wireless access point has WEP enabled, temporarily disable it while setting up the wireless On3-xr unit (you should also take note of your home network's SSID). After you're sure everything is working, you can once again enable WEP on both your home network and the On3-xr.

Insert the wireless card into the front slot of the On3-xr. Plug the power cord into the back of the On3-xr and connect a video cable between the On3-xr and a television. Apply power to the On3-xr by rapidly pressing the button on the front of the unit twice.



As soon as the login screen appears, press 'Enter.'

Press the 'Setup' button on the On3-xr remote control.

Using the Cursor Navigation buttons, scroll over to the tool icon (wrench) and press 'Enter.'

Select "WiFi Setup" and press 'Enter.'



Change the SSID to match your home network's SSID (default is "FIA").



TIP: Use the Back key to erase each digit. For a period (".") press the "1" key twice. After entering a digit, the cursor will automatically advance to the next position if you wait a few seconds.

Select 'Signal Strength' and press 'Enter.'

To support streaming of high-quality video, there should be a signal strength of at least '40.' A Signal Strength of '0' indicates there's no connection at all.

If Signal Strength is present and of sufficient strength, save your settings and exit. Proceed to Step 3 on the opposite side of this Quick Setup Guide.

The On3-xr utilizes industry-standard wireless technology, and may be temporarily disrupted by other high-frequency devices such as microwave ovens and cordless phones. Keep this in mind when placing and using the On3-xr unit.

Troubleshooting - Common Problems and Solutions

PC Connection Problems:

- Make sure the On3 and On3-xr units are on and the power LEDs are no longer flashing.
- Verify the network is functioning properly.
- Check all cables (power and Ethernet) and make sure they're properly connected.
- Double-check that the IP address you entered for the On3-xr unit is correct.
- Verify your home network has a DHCP server and that the IP address for the On3-xr is in the same segment. If no DHCP server is present, a valid IP address must be manually assigned.

- If POPassist doesn't automatically run when the CD is inserted, you can start it manually by clicking on the Windows Start button, selecting Run and then typing D:\popassist.exe (if you put the CD in a drive other than D:, substitute the correct drive letter).
-

TV Viewing Problems:

- Make sure the On3 unit is on and the power LED is lit and no longer flashing.
- Check all cables (power, video and audio) and make sure they're properly connected.
- Make sure your TV is configured properly to display an "auxiliary" video signal. This is usually controlled through a button on the TV's remote control or by a button on the TV.

More comprehensive troubleshooting can be found in the On3 User's Guide. OR, contact the available support assistance resources:

Website
www.fiaon3.com

Email
support@fiaon3.com

Phone
866-767-4333

P/N: 9999-1112 Rev. A